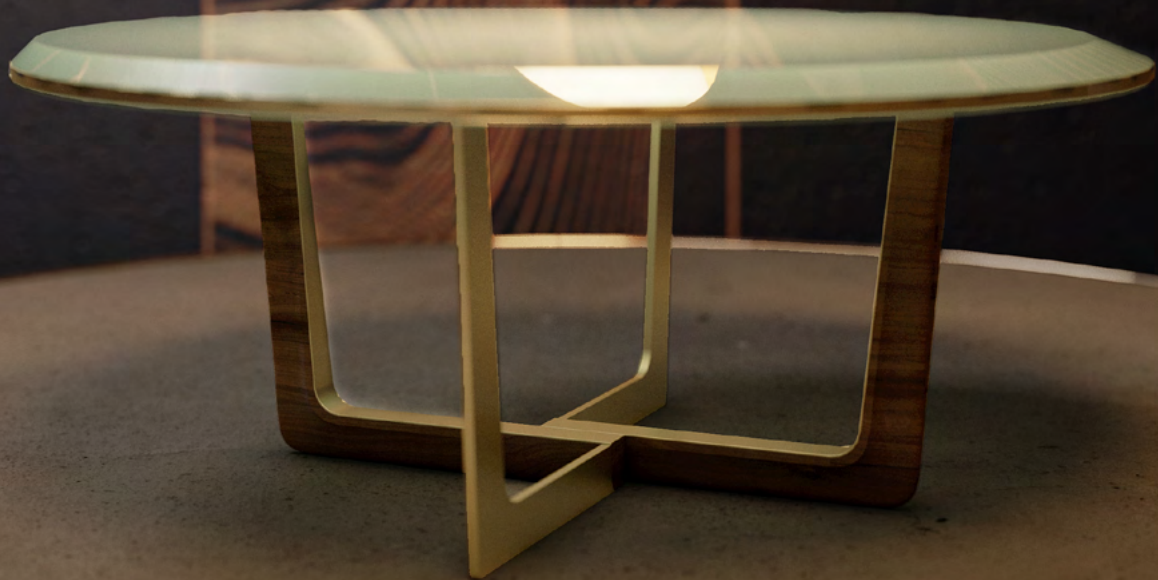




DelightFULL
Unique Lamps



CLEAN & CARE

DELIGHTFULL.EU | INFO@DELIGHTFULL.EU

CLEAN & CARE

Metals

Never use cleaners with alcohols or solvents on metals. Only use fine cotton or extra soft cloths. We recommend that tarnished metals be professionally cleaned.

Polished Metal

Clean polished metal or polished stainless with a damp cloth. Do not use commercial or heavy duty polishes or waxes, as they may scratch or damage the finish. Polishes we do recommend are Brasso, Simichrome, or our favorite Flitz; these can be used without inflicting damage even for the unskilled user, unless the polished surface has a wax sealer coat. These polishes will remove the wax while polishing the metal, but the surface would then have to be re-waxed if it is on a metal that needs to be sealed.

Woods, Lacquer And Mother-of-pearl Finishes*

Wood, lacquered, and linen pieces have been stained and/or polished to bring depth and beauty to each finish. Although most are protected with either a clear coat or wax, they are still susceptible to wear. Care for your wood and lacquer pieces by dusting regularly with a soft cloth. Maintain wood, lacquer and mother of pearl by not placing near heaters and air conditioning units to prevent over-drying or exposure to excessive moisture. Avoid extreme humidity changes in your home, as extremely dry air can cause wood to crack and lacquer to lift. Do not place/ leave hot or moist objects directly on the wood. Rubber or plastic left on the wood finish can also damage the finish. Clean by using a dry or slightly damp soft cloth. Follow by polishing with a dry soft cloth. Do not use commercial, heavy-duty polishes or waxes, as they can yellow light finishes. We recommend that stained or soiled wood, lacquer or mother of pearl pieces be professionally cleaned or refinished.

* Mother of Pearl Finishes

•Polished Brass. Satin Brass. Aged Brass.

•Copper. Oil Rubbed Bronze. Satin Nickel.

•Polished Chrome. Polished Nickel. Satin Chrome.

Glass, Crystal, And Mirror

Glass and crystal can be cleaned by wiping with a soft damp cloth or glass cleaner with no additives. Apply glass cleaner to a soft cloth rather than directly on to the fixture to avoid overspray that may damage other finishes.

Marble

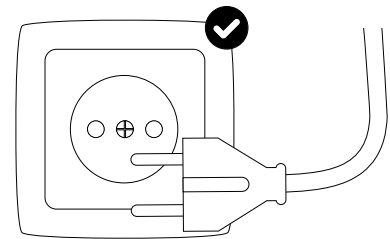
Cleaning must be done in a gentle-handed manner using soft and clean cloths, a little dampened with plain water or diluted with non-aggressive and neutral detergents. It is important not to exert undue pressure on the surface to avoid the forming of marks or non-homogeneous areas. The use of acid or alkaline detergents can damage the surfaces beyond repair.

All Materials

For any product that is heavily damaged or excessively worn, seek professional assistance.

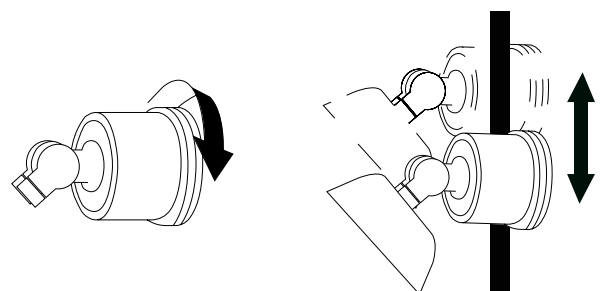
Cleaning

Before cleaning any lamp shade or fixture, disconnect the power source (unplug from outlets). All lamps shades and bases do not use any harsh abrasives, polishes or chemicals.



Articulating

Before moving the arms of each lighting fixture, unscrew the articulations first. If not, you can damage the electrical connections permanently.



Light Bulbs

Warranty and the electrical certificate is inside each lamp shade, here you can find the recommended light bulb for replacement. Avoid touching directly with your fingers in the glass part of the bulbs.

