

LUXURY HOUSES

WORLD'S DESIGN PROJECTS



DesignFULL ESSENTIAL HOME



MAJESTIC PENTHOUSE IN MIAMI	4
ENTRYWAY	8
LIVING ROOM	16
DINING ROOM	26
KITCHEN	32
OFFICE	38
MASTER SUITE	44
KIDS ROOMS	62
ENTERTAINMENT LOUNGE	82
OUTDOOR	96



MODERN APARTMENT IN NEW YORK	100
ENTRYWAY	104
LIVING ROOM	106
DINING ROOM	114
KITCHEN	120
OFFICE	122
MASTER BEDROOM	126
CLOSET	134
TWINS BEDROOM	136
BATHROOM	142



CHARMFUL HOUSE IN SAINT TROPEZ	144
ENTRYWAY	150
LIVING ROOM	152
KITCHEN	158
DINING ROOM	160
HALLWAY	166
BEDROOM	168
BATHROOM	174
POOL	176



TIMELESSLY HOME IN CHICAGO	180
ENTRYWAY	182
LIVING ROOM	184
DINING ROOM	188
KITCHEN	192
MASTER BEDROOM	196
CINEMA	200



COVET VALLEY SHOWROOM IN PORTO	216
LIVING ROOM	222
DINING ROOM	228
MASTER BEDROOM	232
GUESTS BEDROOM	238
OFFICE	242
LIVING ROOM	244
LIBRARY	248



NEUTRAL MODERN HOME IN MILAN	225
ENTRYWAY	228
LIVING ROOM	234
DINING ROOM	242
MASTER BEDROOM	258
HOME OFFICE	268



MID-CENTURY STUDIO X PEPE CALDERIN

MAJESTIC PENTHOUSE IN MIAMI

Famous for delivering unique design projects with high-end standards, Pepe Calderin partnered up with Essential Home, DelightFULL and Mid-Century Club to create the ultimate dream home that captures the heart of the popular city of Miami. Responsible for large, high-profile projects, the designer has over 20 years of national and international experience, working in America, Europe and Saudi Arabia. With a path full of awards, Pepe is recognized for his innovative, energetic and visionary approach to the modern design process. For the Cuban interior designer, every single space is a world of unlimited possibilities and has no limits for creativity. Luxurious, modern, eccentric, this majestic luxury penthouse project presents us with

design excellency, top-quality pieces, and an incredible view of one of the most luxurious marinas in the city. Featuring a carefully chosen selection of costume furniture, bespoke lighting, and unique art pieces, this incredible modern penthouse design features 14 different experiences flowing throughout two floors on top of one of Miami’s most luxurious skyscrapers. Surrounded by incredible views, this flamboyant design project, which can also be seen as the ultimate dream home, brings the luxury lifestyle into every room through its bespoke details. The fourteen different spaces include some extravagant rooms, such as a billiard room/bar, a home theater/cinema, and a playroom for the little ones.

DETAILED INFORMATION					
Project	MAJESTIC PENTHOUSE IN MIAMI	Location	Miami	Interior Designer	MID-CENTURY STUDIO
Area m2	570.9 m2 4950.29 sqft	Price	23.800\$ Million	Website	https://delightfull.eu/en https://essentialhome.eu/



“Miami”

Located in Miami, this wonderful house by Pepe Calderin is a dream home, facing one of the most luxurious marinas in the city, it presents us with an incredible view! Miami is known for its tropical climate, warm most of the year, without major fluctuations, perfect to live and also to spend a beautiful long vacation. Located in a quiet area, this house is close to

major business centers as well as nightlife venues, with easy access to beautiful beaches. This city is host and home to many major world companies, economically very developed is a place for those who can, and this house can! Inspired by the elegance and light of Miami contrasted with the eccentricity of the designer Pepe Calderin we can check out the best of both worlds.



ENTRYWAY

15.5m2 | 161.46sqft

This fabulous million dollar home design is dressed to impress from the very entryway. As you walk in though this majestic penthouse by Pepe Calderin, prepare yourself to emerge in a luxurious open concept flow that provides the ultimate “wow” factor. The entryway area features three different spaces - the foyer, the

powder room and the bespoke staircase - that although it seems irrelevant at first sight, provides a fine touch to the entire project. All of these small areas were upholstered with the finest selection of furnishings, vanities and of course luxury lighting designs by DelightFULL. From all of the wonderful choices by Pepe







Calderin, the one that stands out is the beautiful Atomic pendant lamps in the superb custom staircase feature. One single project, two different floors, two different

experiences. Dynamic, luxurious, and glamorous, these statement features give access to another ultra-luxury experience on the second floor.





LIVING ROOM
52.9m2 | 559.72sqft

Starting with the living room, we see a huge rug in shades of green with snake pattern contrasting with the black of the Marco armchairs and the white of the Fitzgerald modular sofa, two beautiful products from the Essential Home line. When asked about his favorite piece of the project, Pepe had difficulty choosing

from... “It hard to pick one favorite piece from the amazing election you have. But let’s pick Fitzgerald Sofa, the perfect modular series that can be the true shape-shifter”. The glamorous look also features a magnificent geometric statement wall with some beautiful gold lines and a custom fireplace design.











DINING ROOM

Dining and Kitchen: 72.7m2 | 775sqft

In the dining room, gold tones predominate in this beautiful all-white background look. The bespoke furnishings includes a costume design of one of Essential Home’s best sellers known as Monocles sideboard, a piece full of history inspired by the famous 007 movies. It breathes charm and luxury like no other

piece could ever have, making it the dream design for retro and mid-century style lovers. This statement sideboard contrasts beautifully with the luxurious black set of Collins dining chairs, another iconic piece from Essential Home’s line.







KITCHEN

Dining and Kitchen: 72.7m2 | 775sqft

Golden tones prevail in the penthouse’s luxurious open space kitchen design that is incredibly modern. With Kelly bar chairs, one of the best sellers from Essential Home, taking the leading role, who wouldn’t fall in love with this look? For those of you who are getting

to know this sculptural piece for the first time, Kelly was inspired by the sculpted arches of the bar in the classic movie Casablanca, and can be described as unforgettable, stylish, and comfortable, even for long periods of sitting.







OFFICE
16.4m2 | 172.22sqft

The sophisticated office area is the more professional place where you can keep all the household distractions out the door. It's a very spacious room, with two beautiful statues specially designed from scratch for this project, just like the gorgeous Lasdun sideboard, a custom design asked by Pepe

Calderin (that can be soon found in Essential Home collections). The working space was created with the magnificent Lasdun Desk and two velvety Minelli armchairs, two stunning and timeless pieces from Essential Homethat proved that the mid-century style inspiration is more alive than ever.





MASTER SUITE

15.9m2 | 161.46sqft

Going through the master bedroom, we can see a different environment from these common areas we have seen so far. This is a room where simplicity was taken as the main idea to create the overall look. Cleaner tones, without big patterns and colors, and a beautiful statement wall made with marble and wood was the perfect background to DelightFULL's famous

Galliano pendant lamps. These unique pieces feature a modern, sleek design that will complement the decor in any setting. The other point of interest of this look is the beautiful Karlotta single sofa, a piece from the new Kasual collection by Karim Rashid and Essential Home, as well as the custom made bed design made especially for this project by Pepe Calderin.











50

Keeping the same vibe then the master bedroom, the bathroom area features a spa-like feel with its beautiful diamond-shape bathtub, that is complemented with Essential Home's Konstantin side table, a piece inspired by DelightFULL's iconic Ike pendant design,

that is filled with refinement and modernity. Featuring custom vanities and a bespoke chandelier, everything in this master bathroom inspiration evokes the best of luxury through its outstanding selection of materials and textures.



51



KIDS ROOMS

16.2m2 | 172.22sqft

Soft, playful and comfortable, the children's playroom area is a special functional space to create memorable moments. Custom furniture designs that boost your imagination can be found throughout the

space, but the statement of this look is in fact the word "PLAYROOM" written with DelightFULL's iconic marquee letters from the graphic collection.











White marble, soft textures and light blue tone details is what makes this room design so special that it makes you feel like you are in the clouds. The statement of the overall look is DelightFULL's magical

Cosmo chandelier, custom made in two different color shades Designed as a tribute to the mid-20th century race to space, Cosmo modern chandelier is inspired by space, galaxies and the planets that surround us.



Although it doesn't draw much attention, there is a second lighting star in place, known as the Billy table lamp by DelightFULL, a functional and fun fixture that every kid will love. Customized in the light blue shade

to match the boy's bedroom design vibe, this task lamp is one of DelightFULL's most versatile pieces that brings out the essence of mid-century.





Pastel colors, natural textures, magic feelings, the girl's bedroom design is a living wonderland that will transport you to a fairytale in real life. Once again,

we can find creative pink custom furniture designs across the space, proving plenty of storage space to keep things in order.





ENTERTAINMENT LOUNGE

16.2m2 | 172.22sqft

The majestic penthouse design by Pepe Calderin is one of a kind that includes its own entertainment lounge to host the most fabulous events with your family and friends. This area features three different spaces with three different purposes: the family room,

the bar area with a massive snooker table and its own home cinema. Starting with the family room, this look was designed with lighter tones than we have seen so far, where the soothing beige color prevails to keep the space in perfect harmony.









Dynamic, luxurious, eccentric... Three different qualities that describe Pepe Calderin's fabulous bar and billiard room. Stepping away from the neutral tones, this dark and robust space it's all about showing

the best of the rich black tone in different textures and details. With so much going on throughout the space, the look needed a lighting fixture that is one of a kind and simple at the same time, a description



that matched DelightFULL's best-selling Coltrane suspension piece that features a minimalist and industrial feeling to it. As for the home theater or cinema if you like, Pepe decided to add comfort and

style through Essential Home's unique Pearl sofa that is complemented with two Konstantin side tables from the brand's collection.







OUTDOOR
16.2m2 | 172.22sqft

A dream home like this majestic penthouse designed by Pepe Calderin couldn't be 100% perfect without some outrageous outdoor areas where you can enjoy the magnificent views of the bay area and experience

the real Miami heat. Both of these unique spaces were created with bespoke furnishings from Essential Home's outdoor collection and some gorgeous lighting fixtures by DelightFULL to enlighten the night.







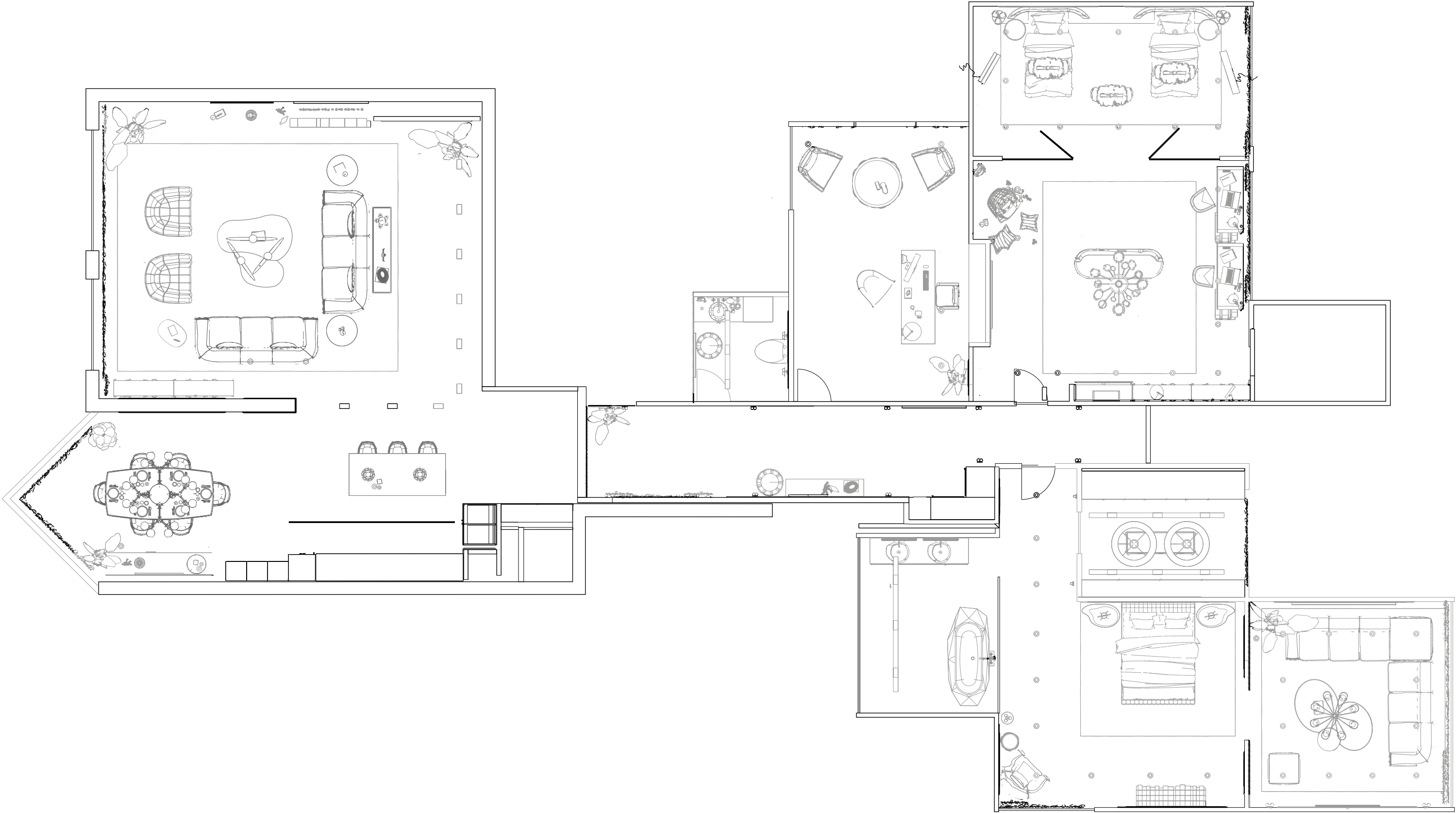
CAFFE LATTE

MODERN APARTMENT IN NEW YORK

Covet House proudly welcomes you into its second luxurious project in a series of curated houses. This time, you're invited to a 295sqm Penthouse in New York. An 8 room luxury house focusing on functionality and with a contemporary modern design in neutral tones to create an effortlessly chic look. A family-friendly aesthetic with a cozy appeal, blending perfectly comfort with design, with subtle furniture, upholstery, lighting, and accessories pieces granting an exciting design without being too overpowering. The second of a series of luxury curated houses by Covet House,

now in a completely different style, this 295 sqm, 8 room penthouse in New York focuses on functionality and contemporary modern design in neutral tones to create an effortless chic look. The social areas include an open-plan kitchen, dining and living area, as well as a powder room and a home office. Moreover, the penthouse features two extraordinary private areas - a sophisticated master bedroom which includes its own living area, and the magical kids quarters which include the bedroom, a play and study area and bathroom.

DETAILED INFORMATION					
Project	Modern Apartment in New York	Location	New York	Interior Designer	CAFFE LATTE
Area m2	295m2 3175.35sqft	Completed	March 2021	Website	www.caffelattehome.com



ENTRYWAY

Penthouse: 295m2 | 3175,35sqft

Setting the first impressions, the entryway hall welcomes you into a journey of effortless chic design. Connecting all the rooms, it serves as the main artery for the house with a privileged view over all the open space areas.



LIVING ROOM

Penthouse: 295m2 | 3175,35sqft

An open space area filled with warm and soothing upholstery and tones. The living room was carefully put together with one clear goal: comfort. Spacing and the overall setting of the furniture and decoration were design to provide a calm aesthetic, without any of the pieces overpowering each other, mastering the perfect balance between design and functionality. A subtle neutral palette to provide the most nurturing ambiance.







A cosy reading nook was developed for moments of needing to step away from the computer, kick back in a chair, have a coffee, and read while recharging energies. The reading nook is composed by two swivel

velvet ESSEX Armchairs, that give the possibility to face the world outside through the window or to be more guarded inside. On the opposite side we have a beautiful fire place to warm the room, creating the



most charming ambience. The tv space of the living room is in very good company with the robusta, a two table marble top center table that fits perfectly with the neutral and contemporary modern interior.



DINING ROOM

Penthouse: 295m2 | 3175,35sqft

What better place to enjoy a fine dinner with friends and family than a beautiful and inspiring dining room? This room was design to provide exactly that: a beautifully decorated and furnished area, with a practical and cozy approach. If it is time to eat and spend time with family and friends, the happiest place will probably be the dining room.







White is the main color for cleanliness and calmness as well. The penthouse's dining room is exquisite in detail, notice how the boiserie in the walls frames perfectly the artwork, and how the esthetic of the room becomes one with the open space area. No furniture or

lighting accessory was left to chance when playing with such a sensible color palette is a stake. Clean, defined lines define this setting's architectural spacing. when the opposite is brewed into perfection by using soft organic lines in the accessories and upholstery.



Again, the neutral tones are in sync with the other open areas, both in design and taste. The dining room is an open, neutral, practical, and cozy area, with everything that is needed. Just seat and enjoy.

KITCHEN
Penthouse: 295m2 | 3175,35sqft

Sharing the same area with the dining room, a fully equipped kitchen with built-in appliances, and a design that seamlessly becomes one with the other rooms. The use of the marbles provides a cleanness to the eye and exudes an elegant and modern appeal, suiting for a family or friends get together, especially with the marble countertop, the perfect place to start your dinner party. A true feast for the eyes.



OFFICE

Penthouse: 295m2 | 3175,35sqft

A masterful combination of items, where design meets professionalism. A generously wide area, comprising of two distinctive areas: the office area and the reading corner. Designed to be a place of work, its main goal was ergonomics and functionality. The office follows the same structure and architecture as the other spaces but feels like its own unique styling and appeal.





MASTER BEDROOM

Penthouse: 295m2 | 3175,35sqft

Yet another comforting zone, the master bedroom was designed to render the ultimate relaxing a calm experience. Few elements were set to make the room as subtle as possible not to be too loud, this elegant bedroom transpires a peace and quietness perfect for a relaxing night.







The right place to rest and recharge after a long, hectic day. With a few simple decor upgrades, like smart furniture choices, neutral colors, chic lighting treatments, and tasteful accessories, it will sound like heaven. Accomplishing the master bedroom, there are

few elements to highlight, like the cozy sitting room. With a huge sofa and center table, it's the perfect space to comfortably seat and rest, reading a book or watching a movie. The master bedroom isn't complete without an astonishing en-suite bathroom. One of



the many amenities of the master bedroom is the complementing sitting room. A smaller private corner room, the perfect retreat, or a calm reading area. Borrowing its design straight from the main living room is the ideal place for an intimate and personal escape.

Clean and airy, this sophisticated setting is all about being subtle but still creating a powerful statement through aesthetic.



CLOSET
Penthouse: 295m2 | 3175,35sqft

Although with a simplistic design, the master bedroom is filled with elements that fulfill a design worthy of this penthouse. Besides an en-suite bathroom, the master bedroom is complemented with a walk-in closet that immediately transports us to a private experience worthy of some of the most luxurious brands in the fashion industry. Simple in design, complex in the details.



TWINS BEDROOM

Penthouse: 295m2 | 3175,35sqft

A house is not a home without the lively laughter and play of children. In this case, double the fun. The twins’ room is both fun and aesthetically pleasing. Doubling on the items and doubling on the styling with a genderneutral palette, complete with an office and private bathroom. A whimsical place that allows comfort, safety, and functionality without compromising on the playfulness of the room.







As we enter the space we can not be feeling anything else besides amazement. With the view of the magic snowfield that is happening outside, this bedroom was got natural lighting completed by the floor lamp Graphic Letter by Circu to bring extra sparkle into

space. The Bun Van Bed is the star of this large size bedroom. With a custom design specially made for this house, the Bun Van inspired by the iconic 60's camper van Fillmore from the Disney movie "Cars", is produced in fiberglass with chrome-plated finishes



and the inside is made of palisander wood veneer, containing several storage compartments, a bed, a TV, desk, mini bar, and a sofa.

BATHROOM

Penthouse: 295m2 | 3175,35sqft

Although a service bathroom, the details and functionality in this room weren't forgotten. The utility cabinet, a modern staple in amenities serves as the backbone for all the bathroom, leaving a fair amount of space for the other pieces. Glamorously decorated and stylish, the bathroom continues the overall aesthetic of the penthouse: neutral and clean.





MID-CENTURY STUDIO X CARLO DONATI

THE CHARMFUL HOUSE IN SAINT TROPEZ

Get ready to travel back in time inside this timeless home furnished with some of the most exquisite furniture and lighting pieces of the Dolce Vita Collection in partnership of Essential Home with Carlo Donati Studio. A comfortable environment, where the classic meets the casual without forgetting the luxurious mid-century details present in all areas of this wonderful

home. Carefully chosen timeless and neutral colours, like brown, beige and grey, throughout the entire space with the use of different patterns and golden features. The perfect combination of sophistication and modernity in the most attractive location of the French Riviera. Get your daily luxury dosis and don't miss the tour of the most chic house in Saint Tropez!

DETAILED INFORMATION					
Project	The Charmful House of Carlo Donati in Saint Tropez	Location	Saint Tropez	Interior Designer	MID-CENTURY STUDIO
Area m2	457m2 4919.10sqft	Completed	November 2021	Website	https://delightfull.eu/en https://essentialhome.eu/



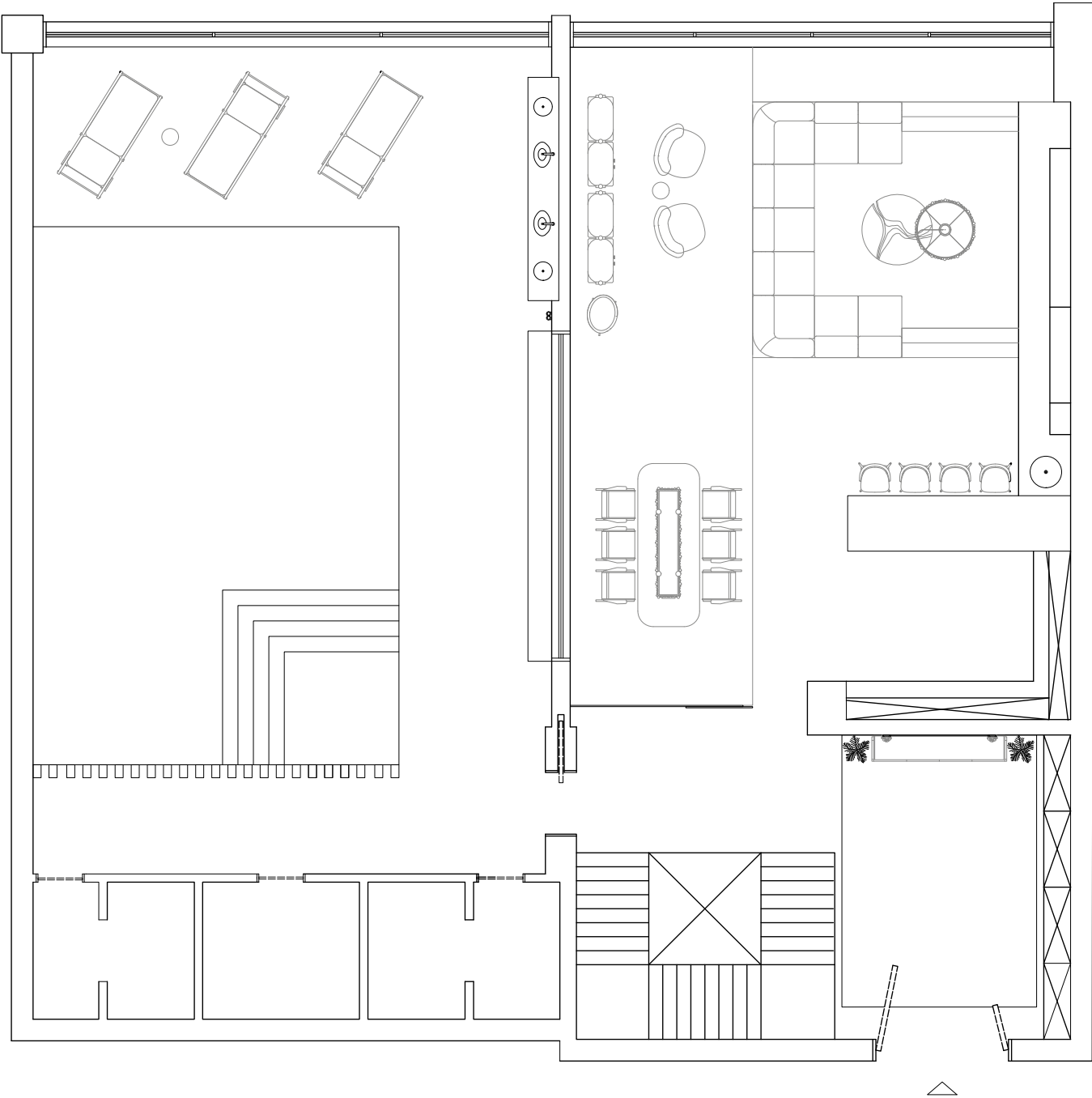
“Saint Tropez”

Located on the beautiful coast of Saint Tropez, in the Côte D’Azur region with a wonderful ocean view, this house is the luxury definition. A project featuring pieces from Essential Home and DelightFULL, two brands that represent the mid-century luxury style. Saint Tropez in the south of France is, nowadays, the trendiest location of the French Riviera. Closely located to Nice and Marseille, this location used to be

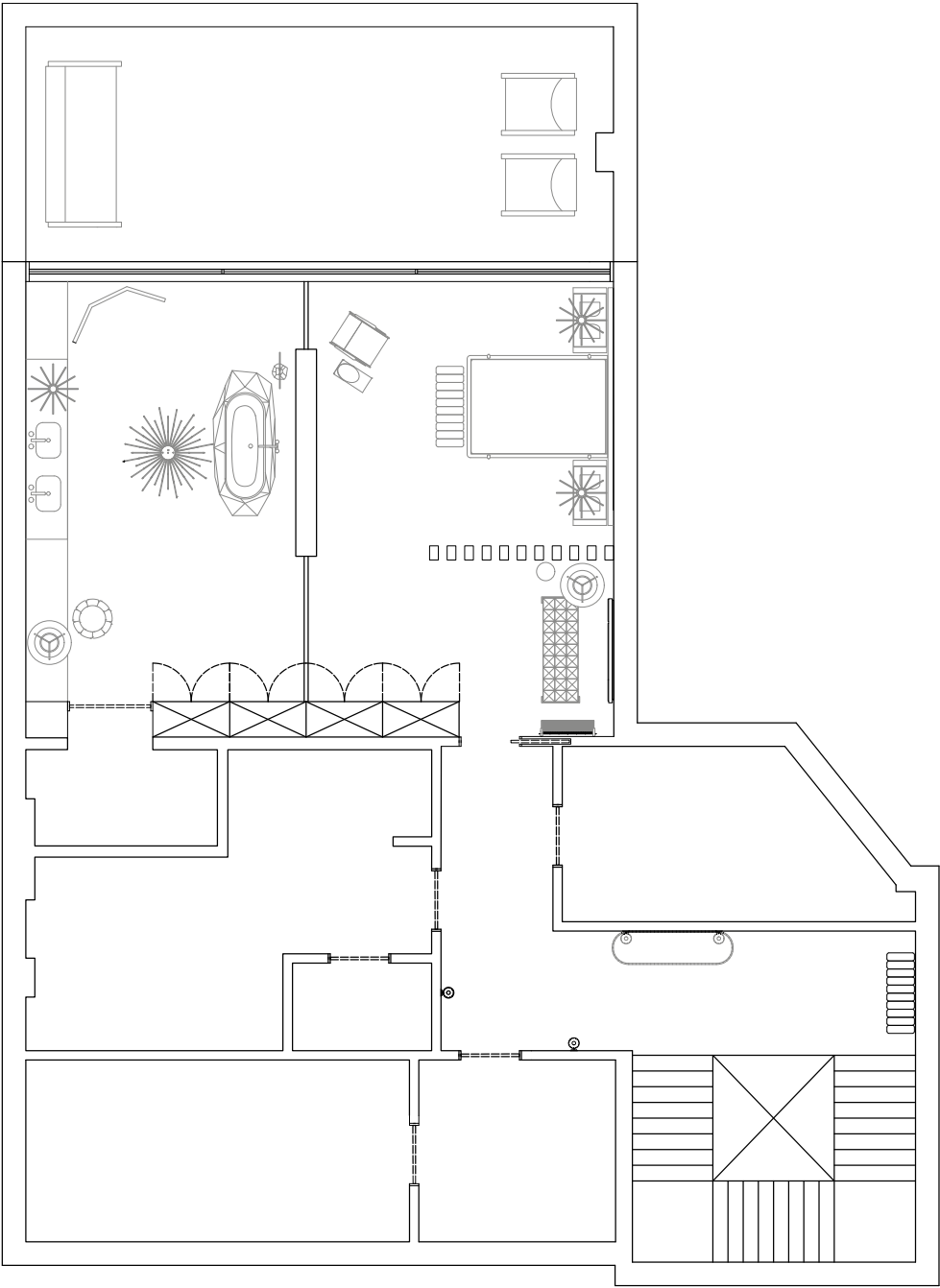
a military stronghold, as well as a fishing village. The narrow water body, Gulf of Saint Tropez, provides this village with particularly beautiful sights. Throughout the years, this location became prominent due to the influx of cinema and music artists. Currently, Saint Tropez is seen by the American and European jet set and tourists as a resort.



136



137



ENTRYWAY

41m2 | 441.32sqft

A modern spacious entering space with marble walls that create such a majestic environment. Right up front, there is the amazing combination of the wooden Vittorio Sideboard from Essential Home with the golden Brubeck Wall Lamps from DelightFULL. The floor is

almost fully covered with the Claudia Rug creating a comfortable environment right when entering. From this luxury entrance there is a great glass view and access to the other areas of the house.



LIVING ROOM
40m2 | 430.56sqft

An open living room area with full access to, both the kitchen and the dining room areas. There is an upper seating space with furniture pieces carefully chosen to entertain. Two Zelda Single Sofas by Essential Home, as well one black and white marble Vinicius Side Table

piece for support. The Baughman Bar Cart is ideal for serving drinks and a great storage area with two white Minelli Bookcase pieces is also present to cover the whole wall behind this area.







After descending two small steps of black marble floor, there is the main seating area completely covered in animal-printed rug with the big Fitzgerald Modular Sofa on it. This amazing textile and brass sofa piece

occupies approximately two corners of this rectangular space. A round white statement center table in front of the sofa gives support to the comfortable seating area. The sofa has a privileged view to a great golden wall



with a TV screen on it. The entire palette of this room presents timeless colour shades of black, white, grey and gold, that provide comfort and sophistication, at the same time, in only one room.

KITCHEN

29m2 | 312.15sqft

The kitchen is fully dressed on several marble stone types, white, black and brown shaded. This area is fully equipped with everything a modern kitchen needs and has some interesting decor details, like the Miranda Pineapple Table Lamp that sits on the black marble

countertop. There is also a small balcony seating area with upholstered in white textile Collins Bar Chairs from Essential Home, as well as a white DelightFULL Turner Floor Lamp.



DINING ROOM
17m2 | 182.99sqft

The huge dining room is truly inspiring, set in the same space as the kitchen and living room, it has its area very well bounded. It has more than enough space for at least six people, who can enjoy the amazing view to the pool area while having a delicious meal.







Fully furnished with a gorgeous luxury twist to some pieces of Carlo Donati's Dolce Vita Collection with Essential Home there are amazing furniture pieces to find, like the Alberto Dining Table and the Federico Chairs. The Alberto Table makes you want to serve a nice dinner, accompanied by the Federico Chairs with their

unique fifties patterns on the upholstery, paired with the ivory back seats and some unique brass details on the legs. Take the opportunity to also be enlightened by a piece of the Brubeck collection and enjoy the great classics created by Lord Dave Brubeck such as "In Your Own Sweet Way" and "The Duke". Carlo Donati



granted this project in order to enhance the gold, the black and the marble on the walls, DelightFULL entered to illuminate this brilliant project in Saint Tropez.

HALLWAY
30m2 | 322.92sqft

A hallway that inspires, both inside and out. Due to its prime location in cote d’azur, the white upholstered Minelli bench is placed to enjoy this beautiful and elegant view. On the large wooden walls, the stilnovo style Piazzolla wall chandeliers, inspired by the 60’s, bring a retro touch to this hallway. For room furnishing and support, the marble topped Edith Sideboard is to see in its white and mustard yellow velvet version.



BEDROOM

31m2 | 333.68sqft

This passionate bedroom was the perfect opportunity to show the new pieces of the Dolce Vita Collection. The Virna Armchair is a triangular-shaped piece with straight lines and an elegantly simple profile, which is the secret to all its beauty. To support this seating area near the great balcony view, there is the marble Jacobsen Side Table. The great balcony is furnished with the Saccu Sofa and Armchairs of Essential Home’s outdoor collection.





Nino Side Table is a piece that keeps the straight lines and the triangular shape standing on each side of this bedroom's center piece, the Minelli Bed from Essential Home. Above-standing, the Mina Suspension Lamps incarnate the appearance of a stylized round heart-

shaped plant with arms rising like golden branches. Indispensable is also the nude-shaded Minelli Bench placed at the end of the bed for its purpose. This master bedroom also includes a closet area that presents essential elements, such as several pieces of the



Franco Closet from Essential Home, a big full-length mirror, a comfortable ottoman for sitting, as well as a white Miles Floor Lamp from DelightFULL and a marble Vinicius Side Table.



BATHROOM
28m2 | 301.39sqft

This passionate bedroom was the perfect opportunity to show the new pieces of the Dolce Vita Collection. The Virna Armchair is a triangular-shaped piece with straight lines and an elegantly simple profile, which is the secret to all its beauty. To support this seating

area near the great balcony view, there is the marble Jacobsen Side Table. The great balcony is furnished with the Saccu Sofa and Armchairs of Essential Home’s outdoor collection.



POOL
133m2 | 1431.60sqft

A luxury pool area with a wide view to the marvellous French village. Featuring a marble powder area with two white Turner Table Lamps, that create a sense of fun and complement this space’s decor. To lay by the pool, the Noa Sun Beds are just the perfect fit. A marble Vinicius Side Table had to be present, to support this area and create a bond with the other rooms of the house.







MID-CENTURY STUDIO

TIMELESSLY MODERN HOME IN CHICAGO WITH KARIM RASHID

Chicago is known for its bold architecture and incredible connection with art, and this amazing residential design isn't an exception. A new concept of home design has emerged where casualism becomes the star. This unique apartment designed by the mid-century studio shows how style and comfort come together in a beautiful harmonious ambiance using Karim Rashid's newest collection with DelightFULL and Essential Home. Six different rooms show six unique experiences and every luxurious room has its own purpose. Based on the thought that casualism is the future, every piece was achieved to bring people

together in one space, creating that safe and welcoming feeling. Let yourself be inspired by an interior design project like never seen before. The Chicago-based residence features a unique architectural structure where the open concept takes the leading role. Hallway, living room, dining room, kitchen, master bedroom, and cinema room, are connected with high-length windows creating a circular dome in the middle of the apartment that features a majestic tree inside. Providing a unique connection with nature, this interior garden in the center is beautifully complemented with unique lighting and furnishing pieces.

DETAILED INFORMATION					
Project	Karim Rashid's Timelessly Modern Home In Chicago	Location	California	Interior Designer	Mid-Century Studio
Area m2	300m2 3229.173sqft	Completed	February 2022	Website	www.essentialhome.eu www.delightfull.eu

ENTRYWAY

We're all familiar with "making a good impression", and this unique entryway design really transmits the perfect message to impress its guests. The unique wood statement wall shows itself to be the perfect background for the iconic golden Monocles sideboard

by Essential Home. To complement this gorgeous look our designers paired this exclusive piece with an exquisite lighting structure created with DelighFULL's new Capsule suspension designed by the creative Karim Rashid.



LIVING ROOM

In the living room, the earth tones are once again beautifully enhanced with a touch of glamour through the luxurious golden details, such as Karim Rashid’s Kapsule suspension pieces. For those of you who look for comfort, nothing better than the Klaude sofa and the Karlotta single sofa, two unique pieces also by Karim Rashid that are the

epitome of modern and contemporary design with their curved lines that are both fashionable and stunning. Other iconic elements of this unique room are the gorgeous Coltrane wall lamps, Lautner center tables, Philip side table, as well as a nude Minelli bench. Simplicity is the key to a robust room where luxury prevails.





DINING ROOM

Since open concept is the key element of this unique project, the guests have the chance to see the dining room as they are confortly sitting in the living area. This great dining space features a full luxury look that is composed by the beautiful marble stone Bertoia

big dining table with its three cylindrical legs making a perfect pair with eight beige upholstered Isadora dining chairs. The incredible Krown chandelier by Karim Rashid brings an exquisite light and style to this unique space with its greatness and sophisticated lines.





KITCHEN

Next we have a fabulous luxury kitchen design with high-end custom cabinetry made with a combination of dark marble and wood. This unique kitchen set was complemented with other sophisticated black and golden elements, like the bar chairs on the kitchen island or the Karim Rashid’s Katia pendant lamps above it.





MASTER BEDROOM

A reference for refinement in design, a large room that features the rest area (bed) and a leisure area where you can enjoy quiet reading, all accompanied with the view of the winter garden in the center of the house. The product that stands out in this room is the Kay sofa, with a distinctive shape that will be loved by all design lovers looking for an eccentric, yet stunning piece. Designed with high quality materials and expertise, this sofa is comfortable and perfect

for a luxury design project like this home. The bedroom design also features other iconic products from Essential Home and DelightFULL's collection like Minelli, bookcase, the Minelli nightstands and the Turner table lamps. Creativity is a strong fact in this product selection, enticing the eye with new possibilities and shapes. Soft and elegant, each piece is designed with a human and sensual feeling, bringing together contemporary and mid-century in a revolutionary way.







MID-CENTURY STUDIO

COVET VALLEY SHOWROOM IN PORTO

DelightFULL and Essential Home’s design teams have a big task in their hands: inspiring interior designers with their fresh ideas, finding the trendiest niches and materials for new products, while keeping the mid-century fever in each space. If you are looking for mid-century design tips to plan a home renovation with this style, look no more, because this lookbook is perfect for your needs! You will find different inspirations for the

same space, with a different set, products, materials, colors and niches to help you find your own design style. Every single room option we’ve planned by our design team to add some freshness and new trendy pieces to your design project. Covet Valley, a mid-century showroom, that feels like a time capsule and it’s capable of driving us to the best of the golden years of the 50s and 60s.

DETAILED INFORMATION					
Project	Covet Valley	Location	Porto	Interior Designer	MID-CENTURY STUDIO
Area m2	640.97m2 6899.34sqft	Completed	May 2019	Website	www.essentialhome.eu www.delightfull.eu



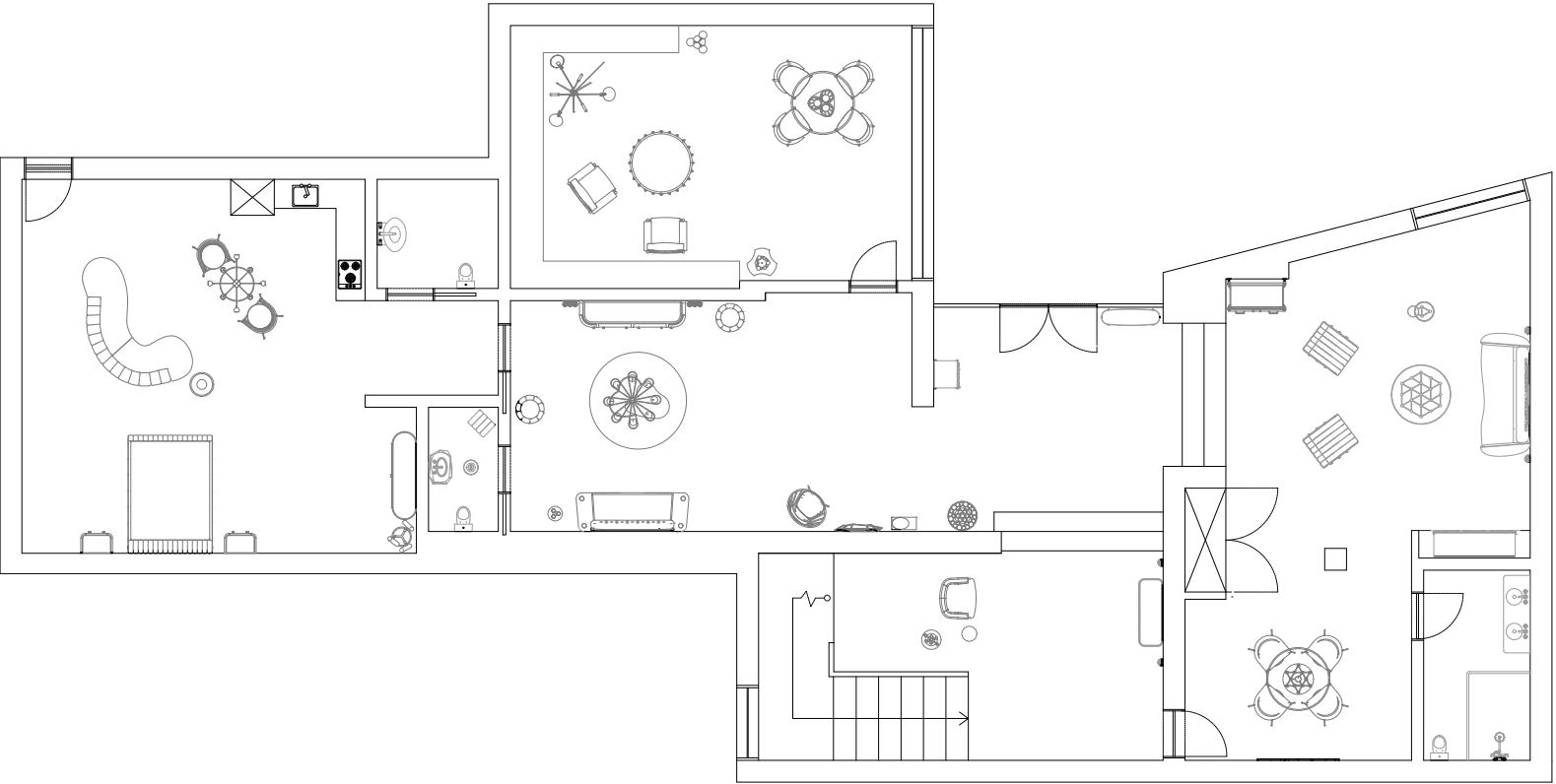
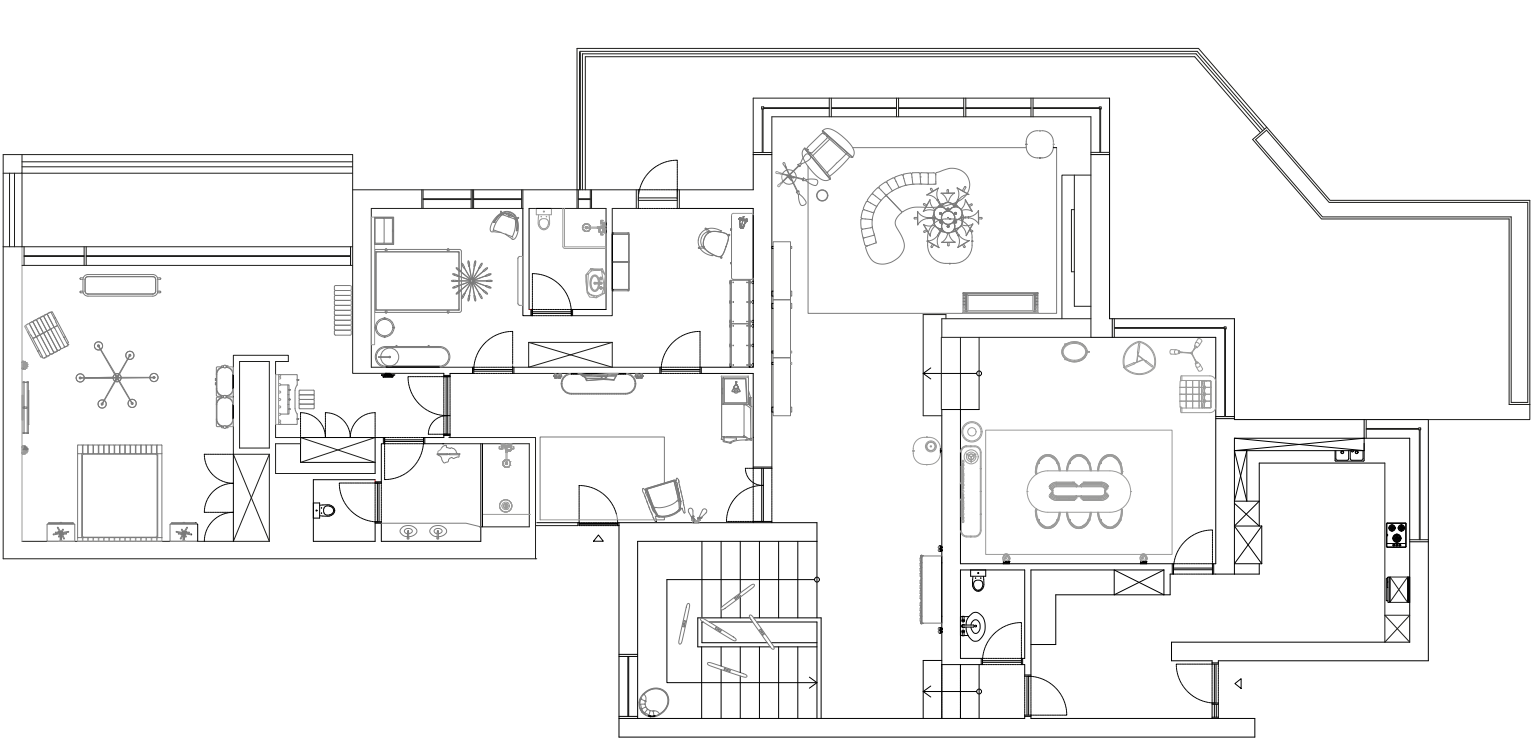
“Douro River”

The epitome of mid-century modern design, otherwise known as the house that could be the perfect fit for an early James Bond movie. Originally built in the 1960s, COVET VALLEY keeps its mid-century architectural roots intact by featuring rigorous geometric lines and large windows that perfectly integrate the house in its natural surroundings, overlooking one of Europe’s most breathtaking landscapes – the Douro, a Unesco World Heritage Site. Inside, an instantly recognizable



mid-century split-level layout is fully decorated with a curated selection of mid-century modern furniture, lighting, and accessories from Europe’s top brands. COVET VALLEY is every design aficionado’s dream. A house that kept its origins intact and, at the same time, a showroom that perfectly embodies the mid-century modern style, featuring a specialized team of product specialists ready to help interior design professionals finish their most demanding projects worldwide.





LIVING ROOM

71.77m2 | 772.53sqft

There is nothing like crafting a luxury living room that is suitable for enjoying family time and entertaining loved ones. This primary spot sets the tone for the rest of your home’s decor. It’s also one of the best places to showcase your design aesthetic by experimenting with color palettes, layers of texture and patterns, and a variety of furniture layouts. It’s meant to be comfortable, inviting, and full of style.







198

A living room is many things all at once: a place to receive guests, a place to gather with family, and sometimes even a place to eat dinner as you catch up on your shows. This jaw-dropping mid-century living

room décor is perfect for every situation! Let the Botti Suspension lamp enlighten your most beautiful memories among friends and family. This particular lighting design was inspired by the one and only, Chris



199

Botti, and you'll feel like you're in the middle of one of his concerts without even leaving the house! Mid-century modern design is all about mixing different materials that didn't seem to belong together and

create a cohesive ambiance. At the end, we can consider mid-century style like the way we want to live today.

DINING ROOM
33.68m2 | 362.53sqft

In years past, the dining room was a space for pomp and circumstance. And while today's gatherings are much more casual affairs — one could argue that the traditional formal space has been replaced by the in-kitchen breakfast nook — there's no doubt that celebratory meals take on even greater significance in a room that's carefully considered and elegantly laid out with a mid-century touch.

200



201



MASTER BEDROOM

47.29m2 | 509.03sqft

Explore this mid-century master bedroom and feel like you're inside a time capsule! While many design trends come and go, the mid-century modern style is well-entrenched in today's design vocabulary. Materials that don't seem to belong together are also combined into one organic whole. Embrace the mid-

century look by sourcing a variety of pieces composed of wholly organic and manmade components just like Carter Pendant Lamp that you can move into the desired position and have a different lighting fixture every single day!







Your master bedroom is your sanctuary, so it may be where you spend most of your time decorating and perfecting it. Every detail counts, and this area really has to reflect who you are and match your design dreams

and wishes. Selecting the most suitable lighting and furniture pieces can totally transform the ambiance. If you're looking for an intimate environment, these mid-century design pieces are the perfect choice to go for!



A bedroom décor that is sophisticated yet functional, elegant yet editorial. We believe that you can already picture yourself coming back home after a long day at work and fall into bed!

GUESTS BEDROOM

16.71m2 | 179.86sqft

As one of the most classic bedroom colors, blue is known for being restful and soothing. One of the most important parts of any design project is the selection of the color palette and we believe these different shades of blue mixed with white and noble materials

will hit the jackpot of the best bedroom design for your guests! They will surely enjoy staying at your place. Basic table lamp is a unique mid-century lighting design fixture that is standing out in the middle of this ocean-blue bedroom.





212

Mirror, mirror on the wall, which is the fairest room of them all? This incredible mid-century corner will give a special touch to your guest's bedroom and will make them feel like royalty! The crown jewel

of this room is definitely the mid-century design piece, Franco dressing table. Diana Table lamp is the epitome of mid-century classic style and we're sure you won't forget this name! Staying at your home



213

will definitely be a unique experience your guests will want to repeat over and over again. Don't be surprised if they have a notebook to grab a few décor ideas to do their own renovation.

OFFICE
13.04m2 | 140.36sqft

A dedicated workspace in your home helps you set aside household distractions and focus on work. Here, we've gathered different mid-century options for home office ideas that will inspire you to design a work friendly space in your own home. This particular office combines the best of mid-century design with a touch of modernity. Lasdun desk is actually a perfect

solution for an office, with a powerful design that works as a space for meetings or creativity. Collins chair in beautiful black leather is a stunning addition to any office for added luxury. For the perfect final touch, Kirk table lamp resting atop your office desk and the addition of Blake shelf will surely make this the perfect office design.



LIVING ROOM
20.44m2 | 220.01sqft

There is nothing like crafting a luxury living room that is suitable for enjoying family time and entertaining loved ones. This primary spot sets the tone for the rest of your home's decor. It's also one of the best places to showcase your design aesthetic by experimenting with color palettes, layers of texture and patterns, and a variety of furniture layouts. It's meant to be comfortable, inviting, and full of style. Full of style and personality, this living room is perfect to relax and spend time in good company. Imagining yourself entertaining friends with the most stylish curvy sofa

is easy. Open the windows and let the sun get inside, while listening to groovy music and enjoying the different living room corners. Curves everywhere it's the theme of the mid-century dream upholstery in this living room. The Marco sofa by essential home, is a sophisticated piece, a homage to the mid-century sofas with a touch of modernity. Next to Sophia single sofa and Konstantin center table, it makes for the perfect mid-century touch to your living room. To finish it off, Brubeck XL Wall Lamp can't go wrong in bringing the luxury to your home decor.





LIBRARY

30.11m2 | 324.10sqft

In a library the ambience and environment should be what matters the most, the focus is on the books and your comfort while reading, enjoying them and relaxing. When designing this room, focus on the textures and colors, those are extremely important to achieve the perfect look. While you may focus on aesthetics, functionality and comfort is always the most important.



222



We are sure that every bookworm will love this home library design idea! Calling all readers: if your collection is overflowing, this is probably the tight time to update your book storage and put together a sophisticated

home library. This mid-century all-neutral décor will make reading easily accessible and it will create a cohesive décor with the rest of your house. This extensive library effortlessly blends the colorful spines

223



of the books with neutral décor pairings, like the brown armchair and the golden lighting pieces. The dedicated library room feels cozy, warm, and inviting while still looking polished and styled.



MID-CENTURY STUDIO x DRAGA&AUREL

NEUTRAL MODERN HOME IN PORTO

While many design trends come and go, the mid-century modern style is well-entrenched in today's design vocabulary. This groovy yet sophisticated home, designed by the mid-century design studio, shows how elegance and innovation can coexist beautifully. Every single room options we're planned by our design team to add some freshness and new trendy pieces to your design project. Explore the rooms filled with the

new design pieces of Night Fever, Draga&Aurel's newest collection with DelightFULL and Essential Home. Here you can see how different aesthetics blend together. Here you can find a spiraling staircase features an elegant and modern look with a touch of mid-century. Don't miss the chance to discover this groovy and elegant project and be emerged by the Night Fever Collection!

DETAILED INFORMATION					
Project	Neutral Modern Home	Location	Milan	Interior Designer	MID-CENTURY STUDIO
Area m2	2080m2 22388.9sqft	Completed	Julho 2022	Website	www.essentialhome.eu www.delightfull.eu www.midcenturyclub.com



“Milan”

Located in Milan, this wonderful house is a dream home, facing a picturesque view. Milan is known for its thriving fashion industry and some of the world’s famous artworks, such as Da Vinci’s famous painting last supper are on display in Milan. The climate is warm most of the year, without major fluctuations, perfect for living and also for spending a beautiful long vacation. Located in a quiet area, this house is close

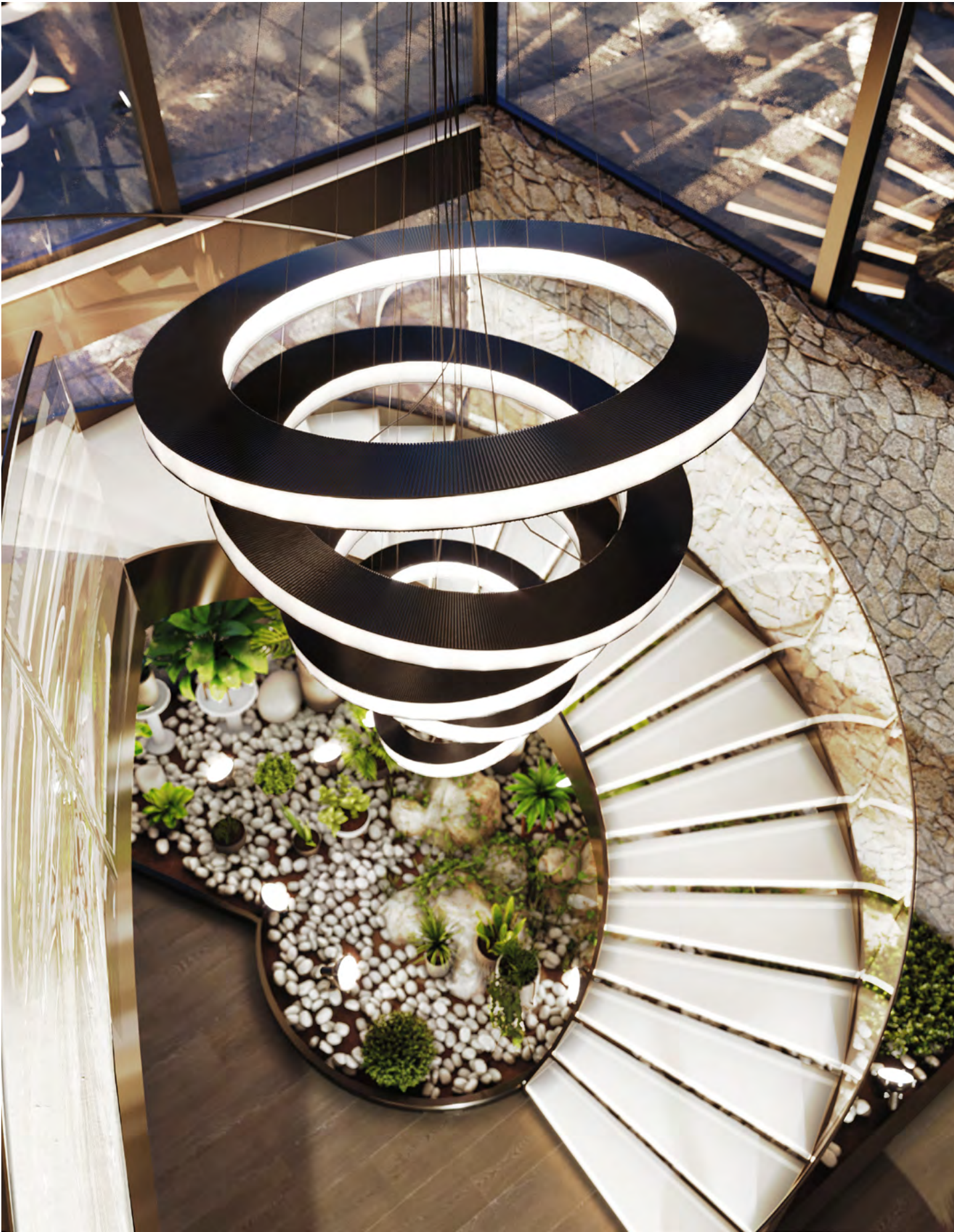
to major business centers as well as nightlife venues. This city is host and home to many major world companies, economically very developed is a place for those who can, and this house can! Inspired by the sophistication and light of Milan contrasted with the glamor with Draga & Aurel pieces we can see the best of both worlds.



ENTRYWAY

40m2 | 430.6sqft

We're all familiar with "making a good impression", and this unique hallway design really transmits the perfect message to impress its guests. Making the best of balancing the outdoor inside, this entryway with a spiraling staircase features an elegant and modern look with a touch of mid-century with Marcus suspension lamps stacked to make a grand chandelier that impresses and calls attention to the eye.







A luxury entryway will always be key for a luxury home design. An entryway sets the tone for a home, so it's worth considering how elements like paint color choices, furniture, art, lighting, and rugs work together to reflect your aesthetic.

Just in front of the staircase and incredible lamp by DelightFULL, the front door features the Craig Console with a round mirror above it, giving this entryway the ultimate mid-century touch.



LIVING ROOM

64m2 | 688.9sqft

There is nothing like crafting a luxury living room that is suitable for enjoying family time and entertaining loved ones. In this room, a round lounge area with a view to the garden, natural light and curved furniture makes for a trendy luxury touch that all homes need.







238

Xenon sofa, fully upholstered in a soft Dedar fabric, is one of Draga & Aurel's most iconic creations of the Night Fever collection. In its beige color, it creates a curved shape that features a Caprice center table

in the middle, a touch of color in this neutral room. Xenon armchair finishes the look perfectly. Next to the modern and elegant fireplace, two Mirage floor lamps create another layer of luxury with its



239

sleek black and gold design. And we can't forget the Taboo side tables in a neutral dark brown glass. The natural light of the windows and ceiling shine on the glass of the tables for added elegance.



DINING ROOM

96m2 | 1033.3sqft

Open-concept floor plans are great. They keep the family together, encourage quality time, and are more fun when entertaining—no one likes to cook alone while everyone else is having a good time in the next room. But at first sight, they can seem hard to lay out. Since open concept is the key element of this unique project, the guests have the chance to see the dining room as they are comfortably sitting in the living area.

242



243





246

This all-neutral modern dining area features a luxury design set: maxime dining table, roxy dining chairs, and the Mirage suspension lamp, that shines even when it is switched off!

A unique lighting design of the newest Night Fever Collection by Draga&Aurel, in a special collaboration with DelightFULL and Essential Home.



247











MASTER SUITE

45m2 + 30m2 | 484.4sqft + 322.9sqft

There are several ways to curate a cozy bedroom décor. But one of the simplest? The right answer is to fill it with some rustic flair. This all-neutral rustic bedroom is sophisticated yet functional yet textured and traditional - the kind of thing we'd find in a cabin and want to snuggle up in immediately.





Thanks to innovative designers, bolder and more contemporary design pieces can feel at home in a rustic decor scheme, too. Rustic spaces tend to feel pretty minimalistic. Blend prints, patterns, textures,

and materials, within the same color family, and create a dynamic, but cohesive décor. Check this warm, inviting, and engaging modern rustic bedroom, filled with some of the most curated design pieces of the



market. Instead of table lamps, Katia pendant lamps are the central pieces of the bedroom, a unique design by Karim Rashid. Taboo side tables are the perfect match, and the ideal nightstand for this modern

ambiance. And last, but definitely not least, the most important feature of any bedroom décor is the bed - Minelli bed will help you recharge the batteries for a daily basis.







HOME OFFICE
60m2 | 645.8sqft

This modern home office idea will help you enjoy working from home! The home office is firmly established as a staple in the modern home. This room is overtaking the kitchen as a focal point. With an emphasis on work wellness, the designers created this space that focus on nature and neutral materiality.







272

An all-neutral set with multiple textures, patterns and materials that add contrast and depth to the room. Touchiere floor lamp will be your best friend,

when you decide to get work done on this incredible, comfortable, and ergonomic, Virginia Armchair, a creation of Studiopepe's last collection, Happy Few. In



273

this room, we can also see the incredible set of Yoyo lighting family, unique design pieces of the newest collection of Draga & Aurel, the Night Fever, in a special

collaboration with DelightFULL and Essential Home.














BRANDS




DELIGHTFULL

WWW.DELIGHTFULL.EU/EN | WEB@DELIGHTFULL.EU

-  @delightfull
-  @delightfull.lab
-  DelightFULL | Unique Lamps
-  @delightfulluniquelamps
-  @delightfull_

BOCA DO LOBO

WWW.BOCADOLOBO.COM | INFO@BOCADOLOBO.COM

-  @bocadolobo
-  @bocadolobostudio
-  boca-do-lobo-menina-design






CAFFE LATTE

WWW.CAFFELATTEHOME.COM | INFO@CAFFELATTEHOME.COM

-  @caffelattehome
-  @caffelattehome
-  Caffe Latte Home




ESSENTIAL HOME

WWW.ESSENTIALHOME.EU | ESSENTIALHOME.EU@GMAIL.COM

-  @essential_home
-  @essentialhomedesign
-  ESSENTIAL HOME | Mid-century Modern Furniture
-  @essentialhomeeu
-  @essential_home




CARLO DONATI STUDIO

WWW.CARLODONATI.IT | INFO@CARLODONATI.IT

-  @carlodonatistudio
-  @carlodonatistudio
-  CARLO DONATI




COVET HOUSE

WWW.COVETHOUSE.EU | INFO@COVETHOUSE.EU

-  @covethouse_
-  @covetlounge
-  COVET HOUSE





KARIM RASHID

WWW.KARIMRASHID.COM/ | OFFICE@KARIMRASHID.COM

-  @karim_rashid_official
-  @karimrashiddesign
-  @karim_design

DRAGA&AUREL

WWW.DRAGA-AUREL.COM | INFO@DRAGA-AUREL.COM

-  @dragaandaurel
-  @dragaandaurel
-  dragaandaurel
-  dragaandaurel

